



MELANIE ANDERSON POWERED BY **exp** TM UK

@ melanie.anderson@exp.uk.com

🌐 melanieanderson.exp.uk.com

☎ 01792 805 075

Bishopston Road, Bishopston, Swansea, SA3 3EH

Offers In Region Of £475,000

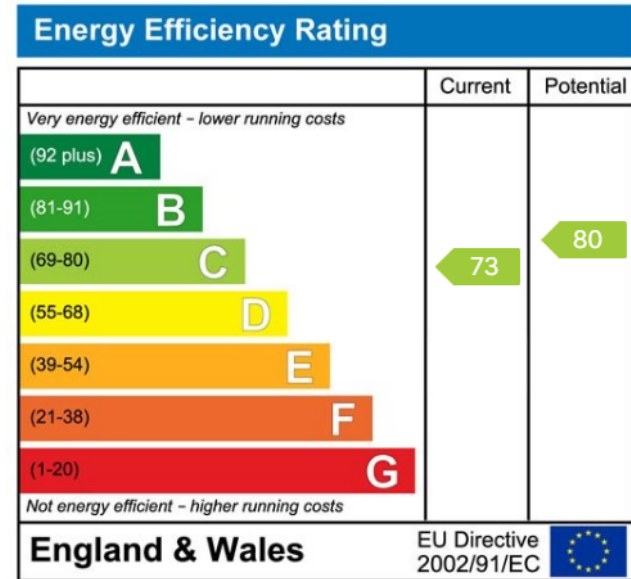
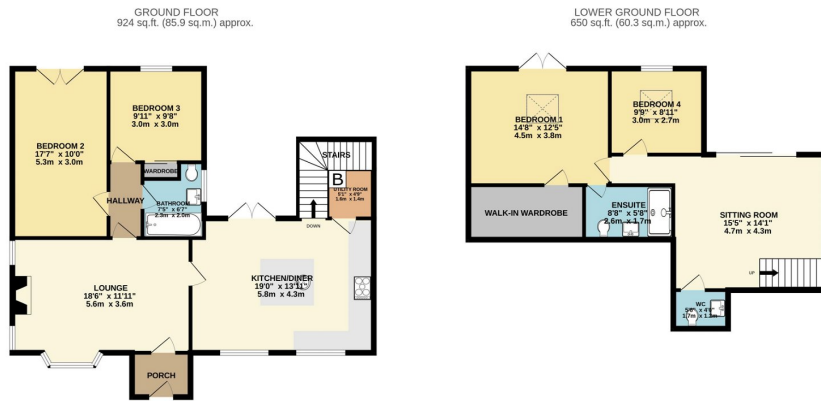
🛏 4 🚗 2 🚗 2



- Four Bedroom Semi-Detached Split Level Property
- Master Bedroom with Walk-in Wardrobe & En-suite
- Pleasant Views with Views over Bishopston Valley
- Within Catchment for Bishopston Comprehensive
- Off Road Parking for Multiple Vehicles
- Contemporary Open Plan Kitchen/Dining Room
- Two Reception Rooms & Utility Room
- Sought After Location in Award Winning Gower Peninsula
- Ideal Family Home
- Quote MA0143



Beautifully presented four bedroom semi-detached property, situated in the sought after village of Bishopston. Benefitting from ample off-road parking, enclosed rear garden, open plan contemporary kitchen/dining room, two reception rooms, four spacious bedrooms and two bathrooms. The ground floor comprises; entrance porch, lounge, two bedrooms, bathroom, kitchen/diner with sit-out balcony, utility room and stairs down to lower ground floor. Lower ground floor comprises; sitting room, w/c, bedroom four and master bedroom featuring ensuite shower room and walk-in wardrobe. This property offers perfect accommodation for a family. Close to local primary and comprehensive schools. Nearby local amenities such as convenience shops, pubs, Pwll-Du Bay, post office and surf shop. Bishopston is located on the Gower Peninsula, UK's first ever Area of Outstanding Natural Beauty. Freehold.



eXp World UK Ltd is a registered company at Level 37, 25 Canada Square, London, E14 5LQ.

Registered company number is 12016573. VAT Registration Number is 327 4120 29